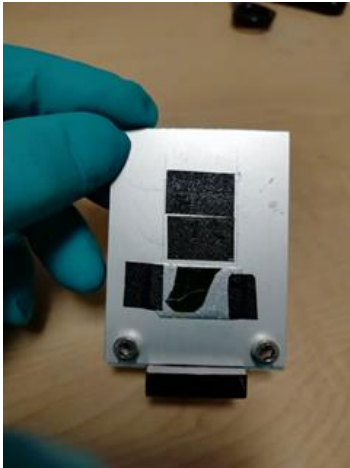


## Microprobe Sample preparation

- 1) Sections 1 and 2 show that the 7-el SDD detector is at a small angle to the sample surface. To avoid shadow effects during sample mapping, the sample surface must be flat and smooth.



For example, when preparing a powder sample on carbon tape (5.0 x 5.0 mm), use a tool with flat and smooth surface to press on sample surface. For a bulk sample, its surface should be polished.

- 2) For a bulk sample or a sample on wafer with a certain thickness, to adjust the sample surface on the beam's focus plane, the sample's thickness should be measured with a digital caliper ruler.

